

207-13

2 C 3 - 11.2

MI-1271 LOW-PASS FILTER
(FOR PG-90 AND PG-91 DE LUXE)

MECHANICAL SPECIFICATIONS

Height 2-3/8 inches
Width 2-3/4 inches
Depth 3-1/8 inches

The MI-1271 low-pass filter has been designed for Types PG-90 and PG-91 *de luxe* equipments to give a characteristic curve similar to the curve published for the Type PG-92 *de luxe* equipment at the Stanley Theatre, Philadelphia, Pennsylvania. This filter will prevent the reproduction of undesirable high frequency background noise or "hash" which is usually caused by poor recording or damaged film.

INSTALLATION PROCEDURE

1. Remove the MI-4256 perforated shield and install the filter in the extreme upper right front corner of the shield.
2. Replace the shield on the MI-4256 power amplifier chassis.
3. Attach the short ends of the low-pass filter cable to the filter as shown in Figure 1.
4. If necessary, remove the two power switch leads and the grommet from the hole through the top of the chassis at the right front corner and splice the switch to the external AC lead. Then run the low-pass filter cable through the hole in the chassis and make cable connections as shown in Figure 1.
5. Add the .005 mfd. capacitor across the two RCA-2A3 grids as shown in Figure 1.
6. Install the power amplifier in the amplifier cabinet and make the correct external connections.
7. Remove the high frequency booster, capacitor C-14 (in MI-4229 or MI-4236).

NOTE: For Type PG-91 equipment both power amplifiers and the voltage amplifier must be treated in the same manner as above.

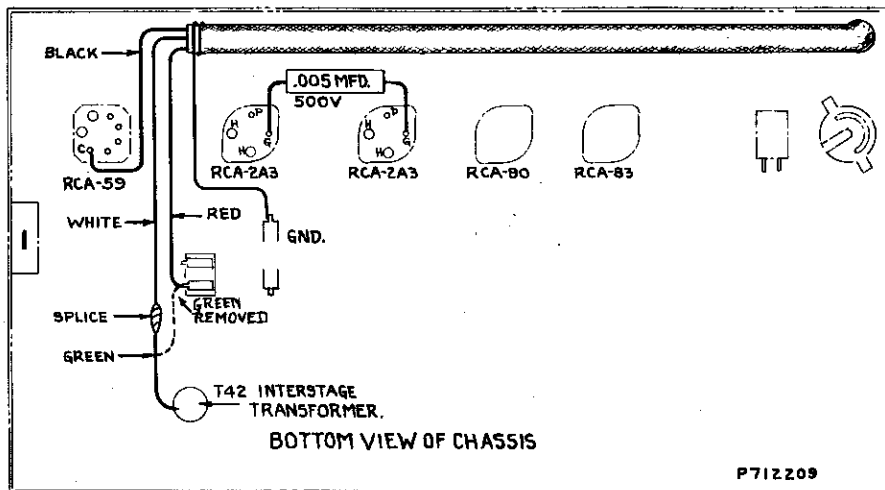
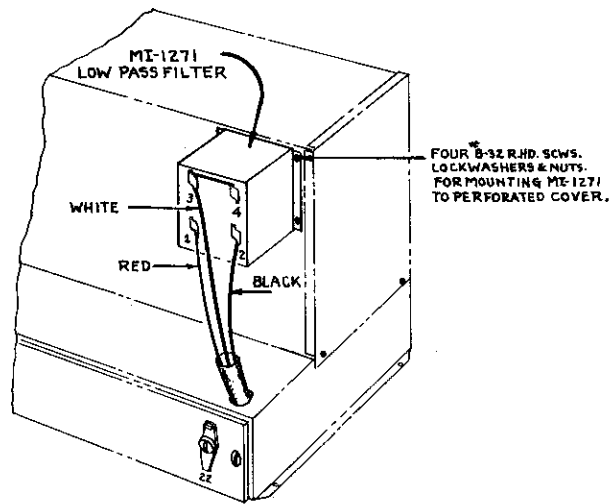


Figure 1 - MI-1271 Wiring

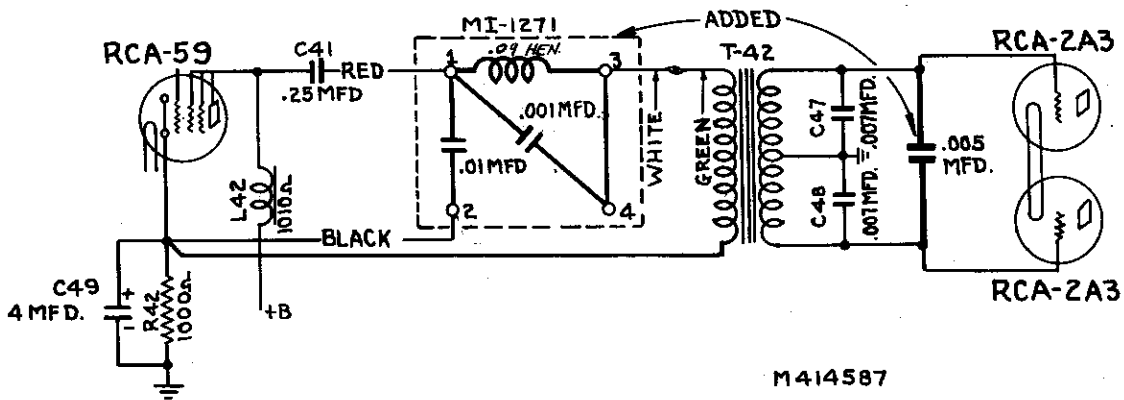


Figure 2 - Schematic Circuit Diagram - MI-1271

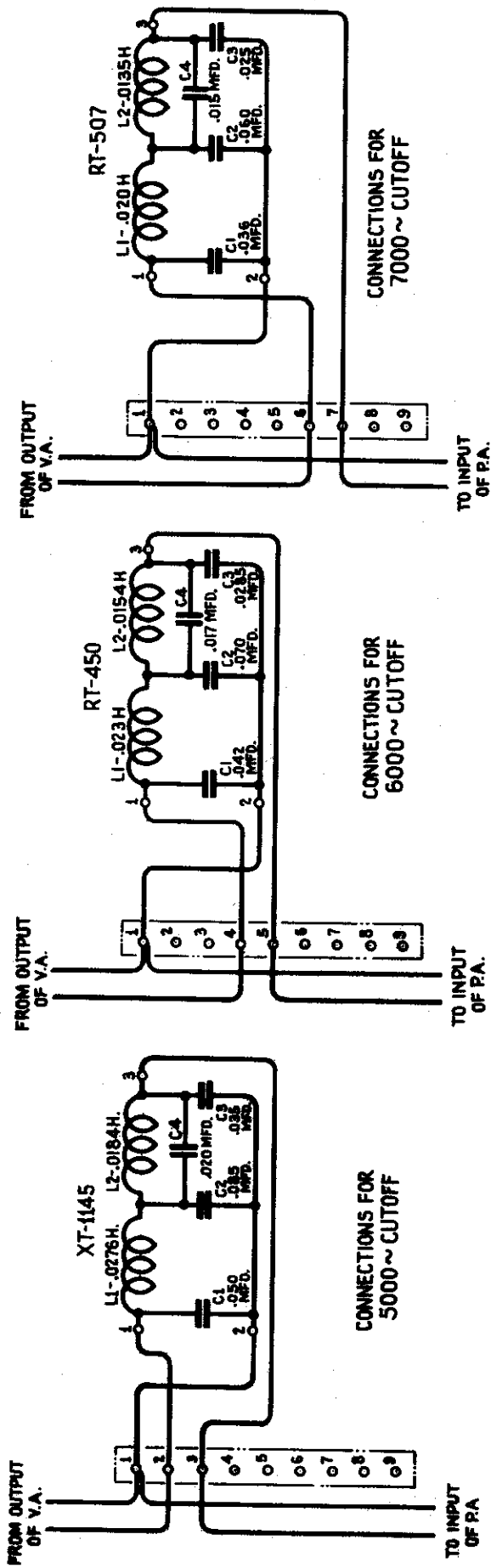


Figure 2 - Schematic Diagram of MI-i272-73 Low-Pass Filter

REPLACEMENT PARTS

MI-4272 - MI-4273 LOW-PASS FILTER ASSEMBLY

INSIST ON GENUINE FACTORY TESTED PARTS, WHICH ARE READILY IDENTIFIED AND MAY BE PURCHASED FROM AUTHORIZED DEALERS

Description	Stock No.	Description	Stock No.
FILTER - (7000 c.p.s.)RT-507..	23941	FILTER - (6000 c.p.s.)RT-540..	23940
FILTER - (5000 c.p.s.)XT-1145..	23942		